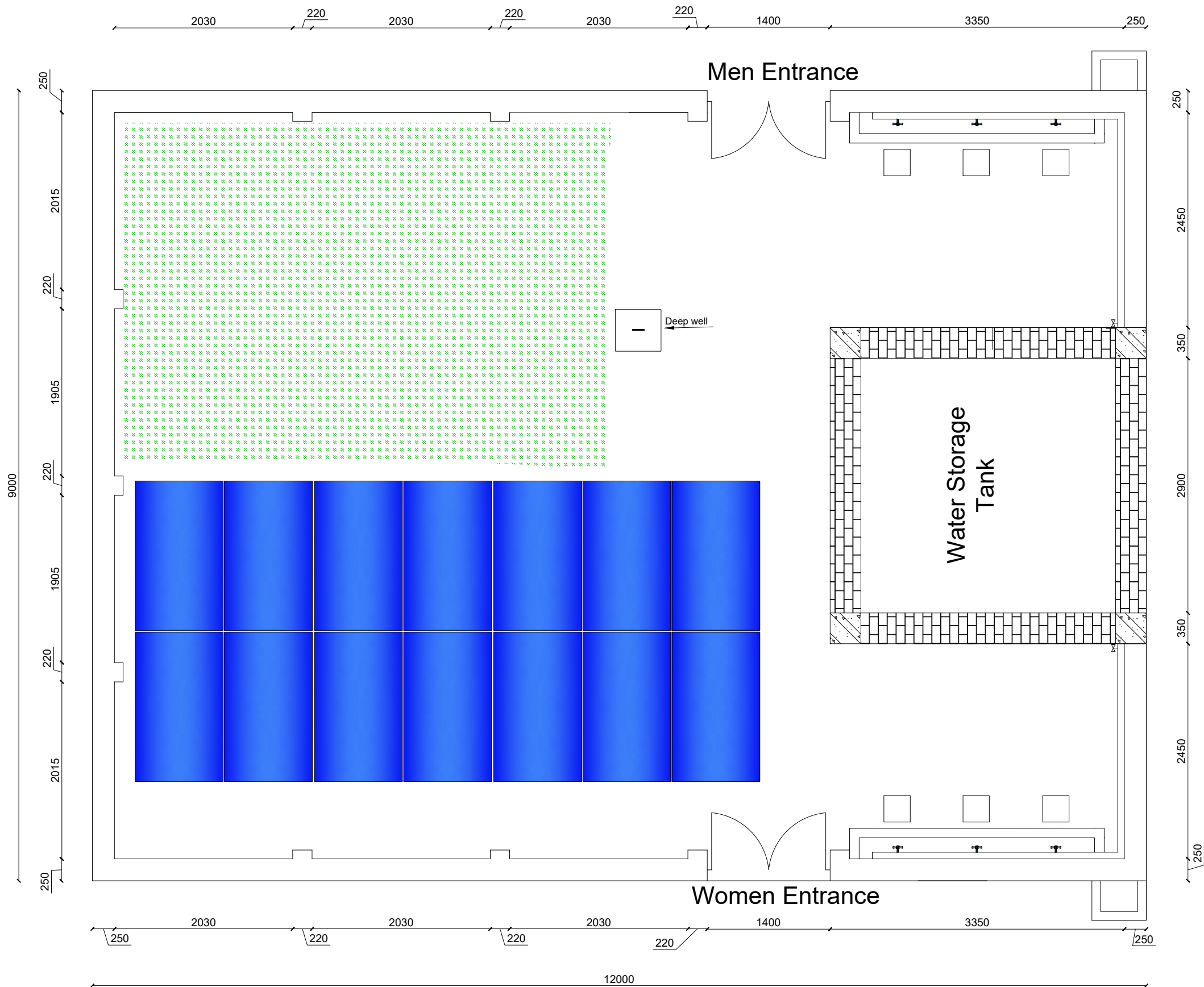


General Plan



Organization for Research
and Community
Development

Designed by	Engineering Department
REVIEWED BY	Engineering Department
APPROVED BY	Engineering Department

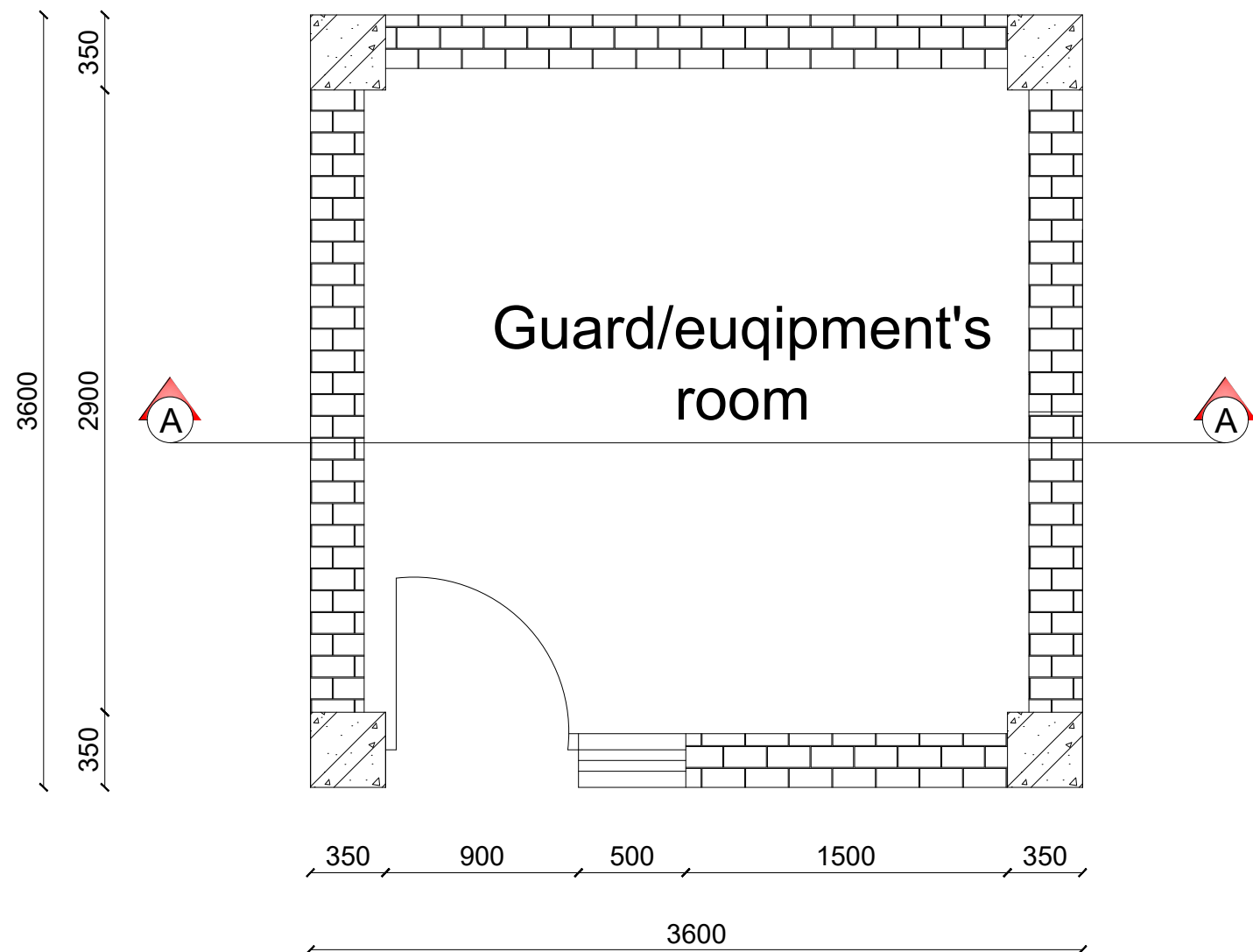
SCALE	As Shown
DATE	Sept. 2022



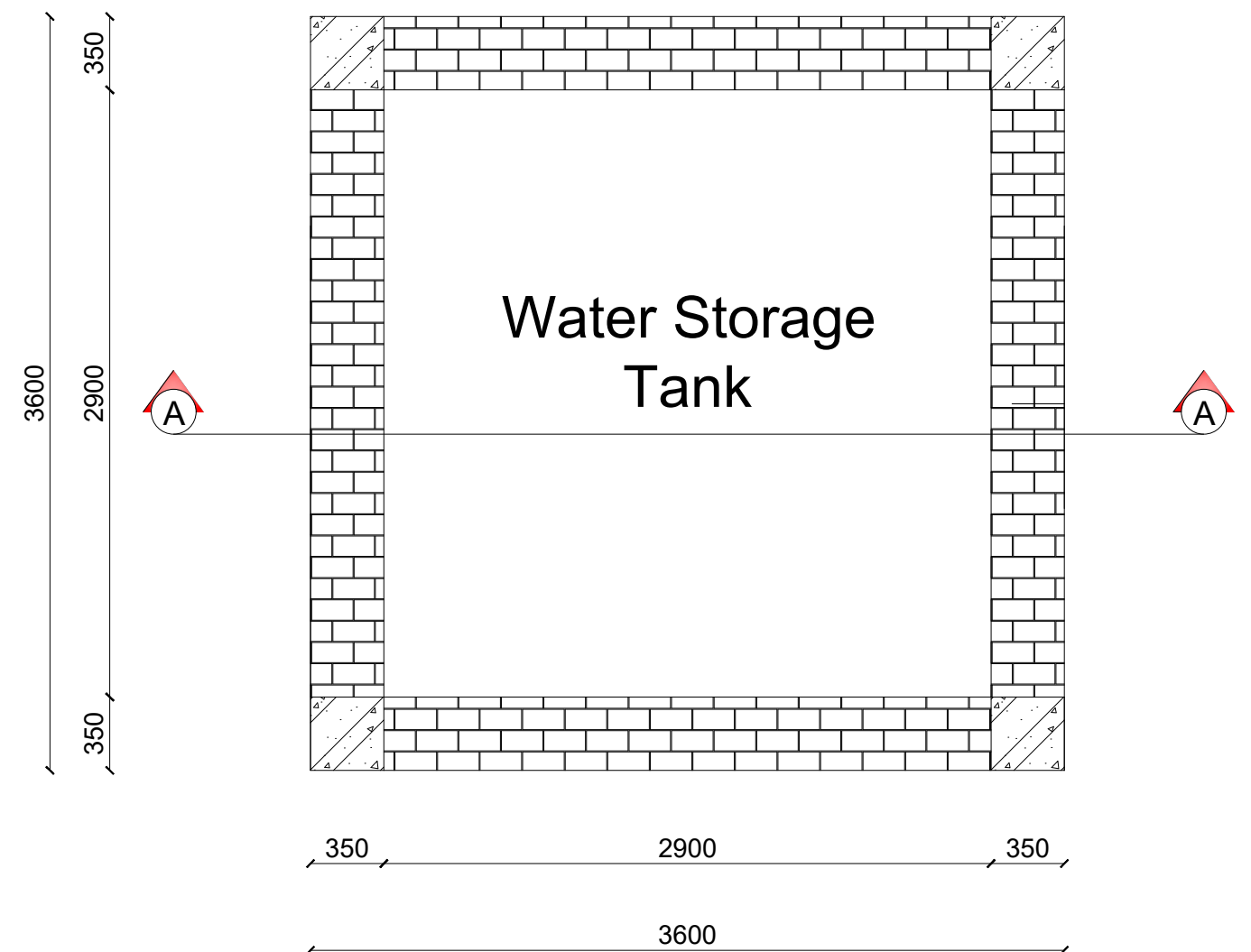
PROVINCE	Baghlan
DISTRICT	Baghlan Jadeed
VILLAGE	Fabrika

PROJECT NAME
17.3 Cubic meter RC Elevated
Water Storage Powered by PV Panels

Ground Floor Plan



1st Floor (water tank) Plan



Organization for Research
and Community
Development

Designed by	Engineering Department
REVIEWED BY	Engineering Department
APPROVED BY	Engineering Department

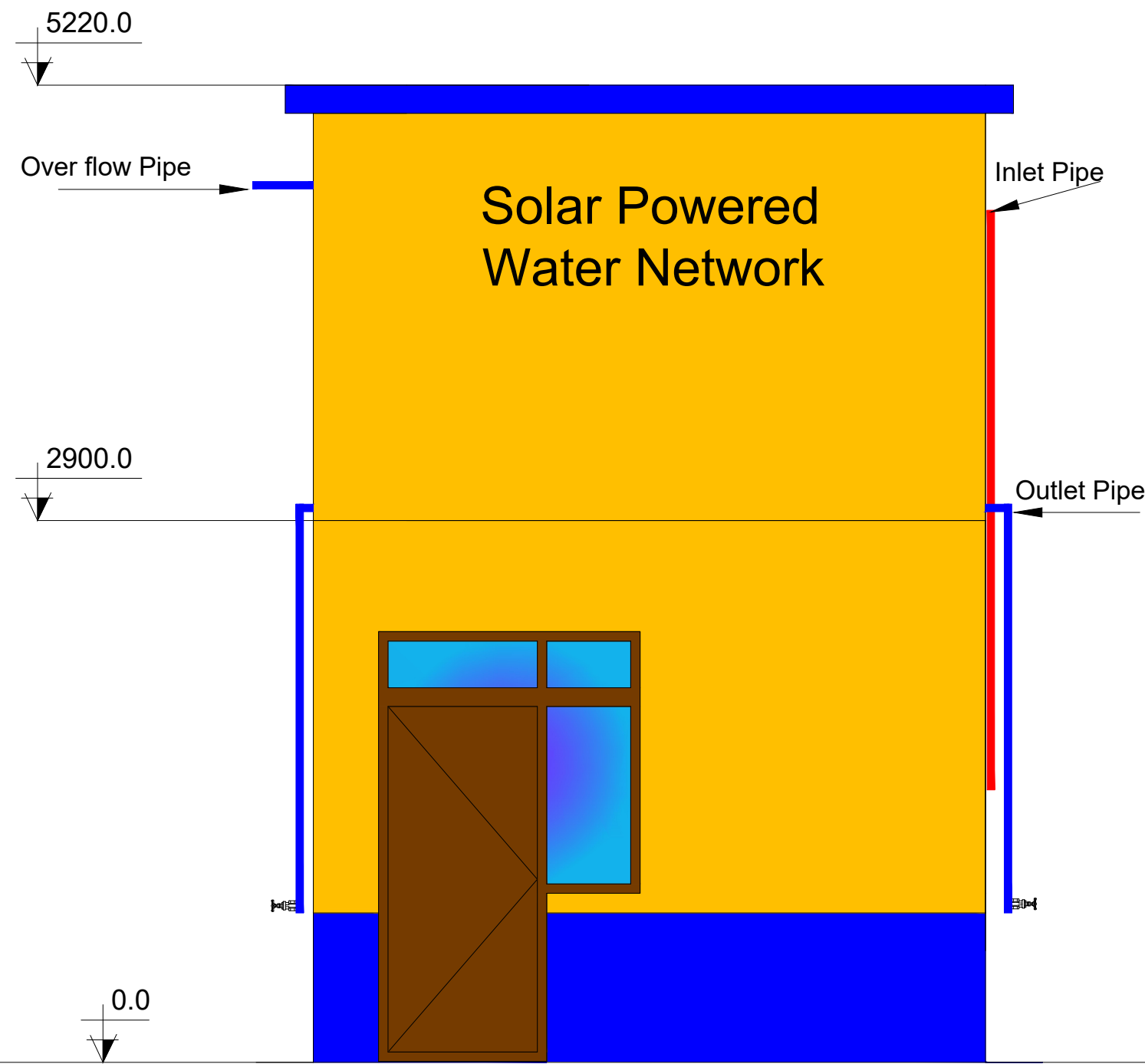
SCALE	As Shown
DATE	Sept. 2022

SHEET NO	2
OF	8

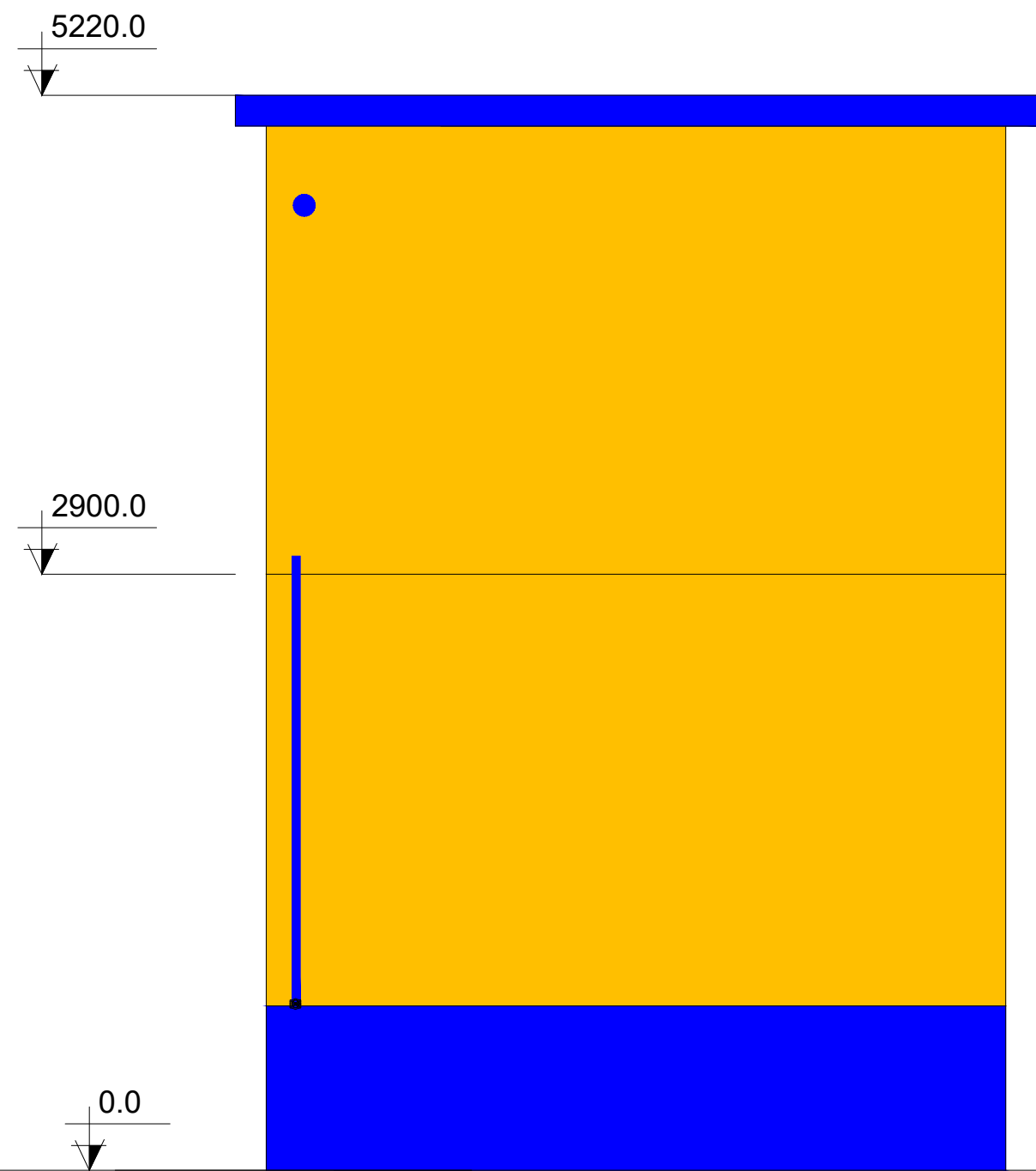
PROVINCE	Baghlan
DISTRICT	Baghlan Jadeed
VILLAGE	Fabrika

PROJECT NAME
17.3 Cubic meter RC Elevated
Water Storage Powered by PV Panels

Front Elevation



Right side Elevation



Organization for Research
and Community
Development

Designed by	Engineering Department
REVIEWED BY	Engineering Department
APPROVED BY	Engineering Department

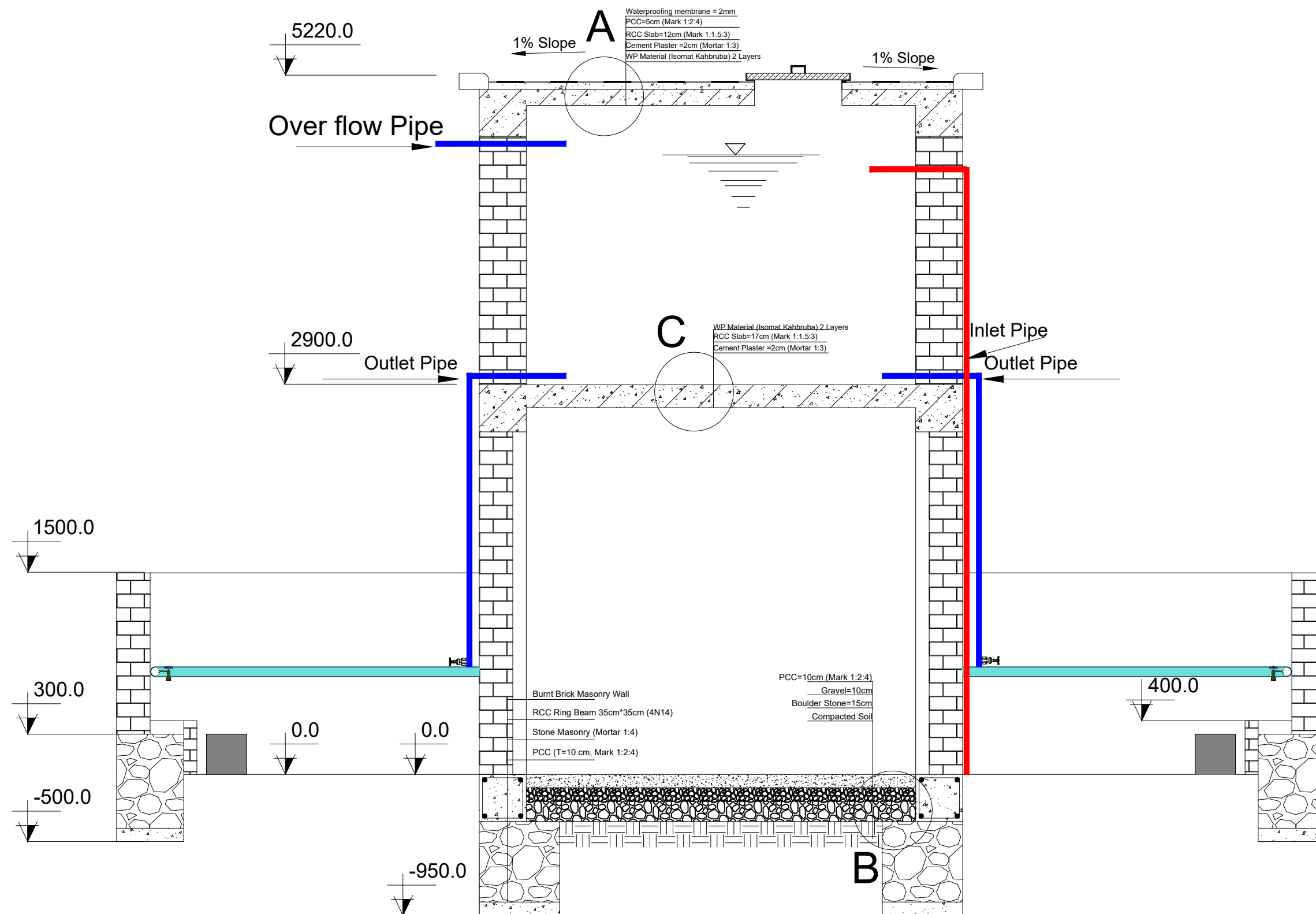
SCALE	As Shown
DATE	Sept. 2022



PROVINCE	Baghlan
DISTRICT	Baghlan Jadeed
VILLAGE	Fabrika

PROJECT NAME
17.3 Cubic meter RC Elevated
Water Storage Powered by PV Panels

Section A-A



Organization for Research
and Community
Development

Designed by	Engineering Department
REVIEWED BY	Engineering Department
APPROVED BY	Engineering Department

SCALE	As Shown
DATE	Sept. 2022

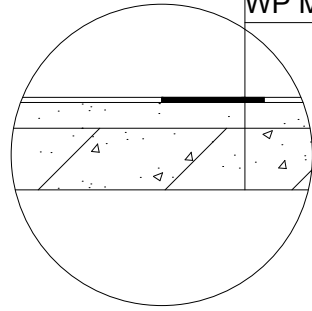
SHEET NO
4
8

PROVINCE	Baghlan
DISTRICT	Baghlan Jadeed
VILLAGE	Fabrika

PROJECT NAME
17.3 Cubic meter RC Elevated
Water Storage Powered by PV Panels

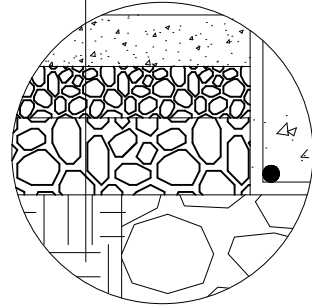
A

Waterproofing membrane = 2mm
PCC=5cm (Mark 1:2:4)
RCC Slab=12cm (Mark 1:1:2)
Cement Plaster =2cm (Mortar 1:3)
WP Material (Isomat Kahbruba) 2 Layers



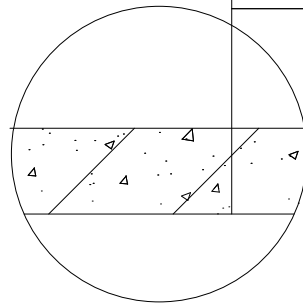
PCC=10cm (Mark 1:2:4)
Gravel=10cm
Boulder Stone=15cm
Compacted Soil

B

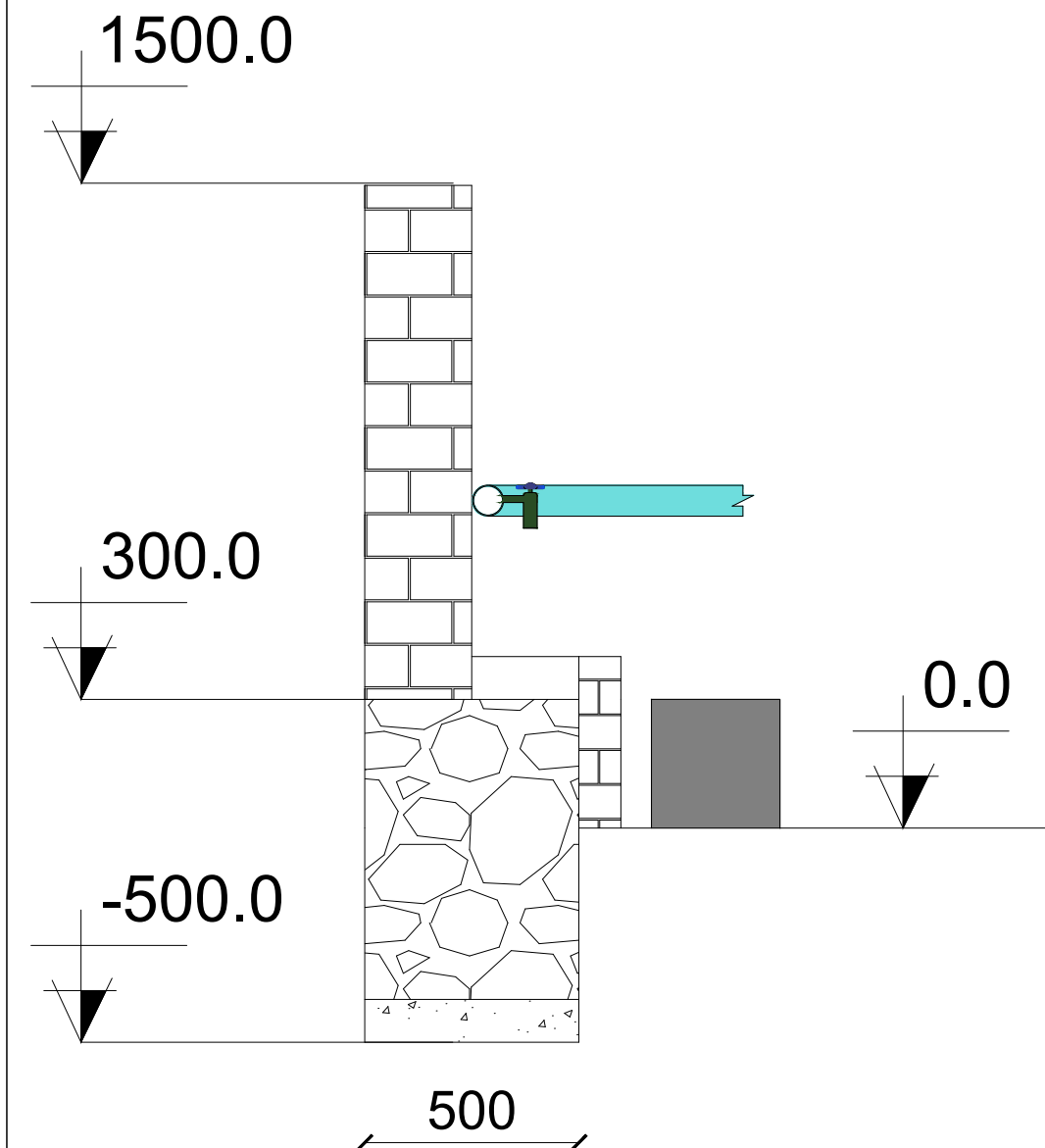
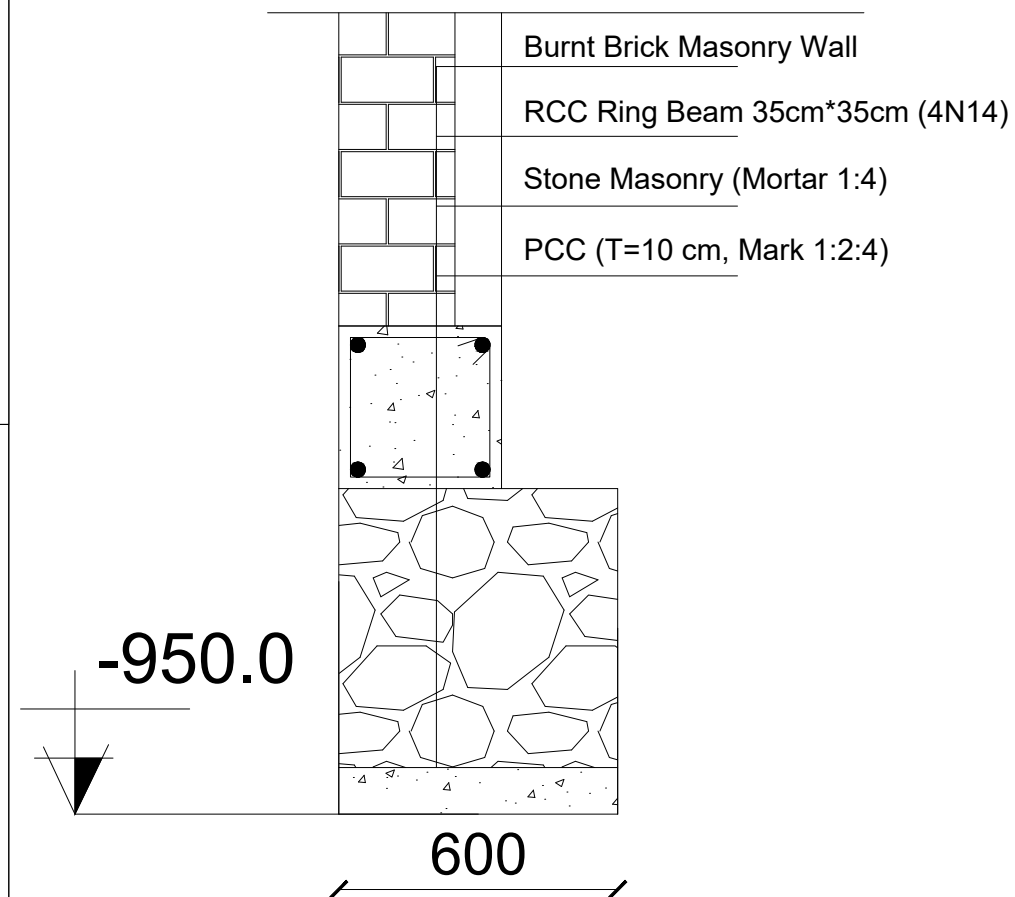


C

WP Material (Isomat Kahbruba) 2 Layers
RCC Slab=17cm (Mark 1:1:2)
Cement Plaster =2cm (Mortar 1:3)



Details



Organization for Research
and Community
Development

Designed by	Engineering Department
REVIEWED BY	Engineering Department
APPROVED BY	Engineering Department

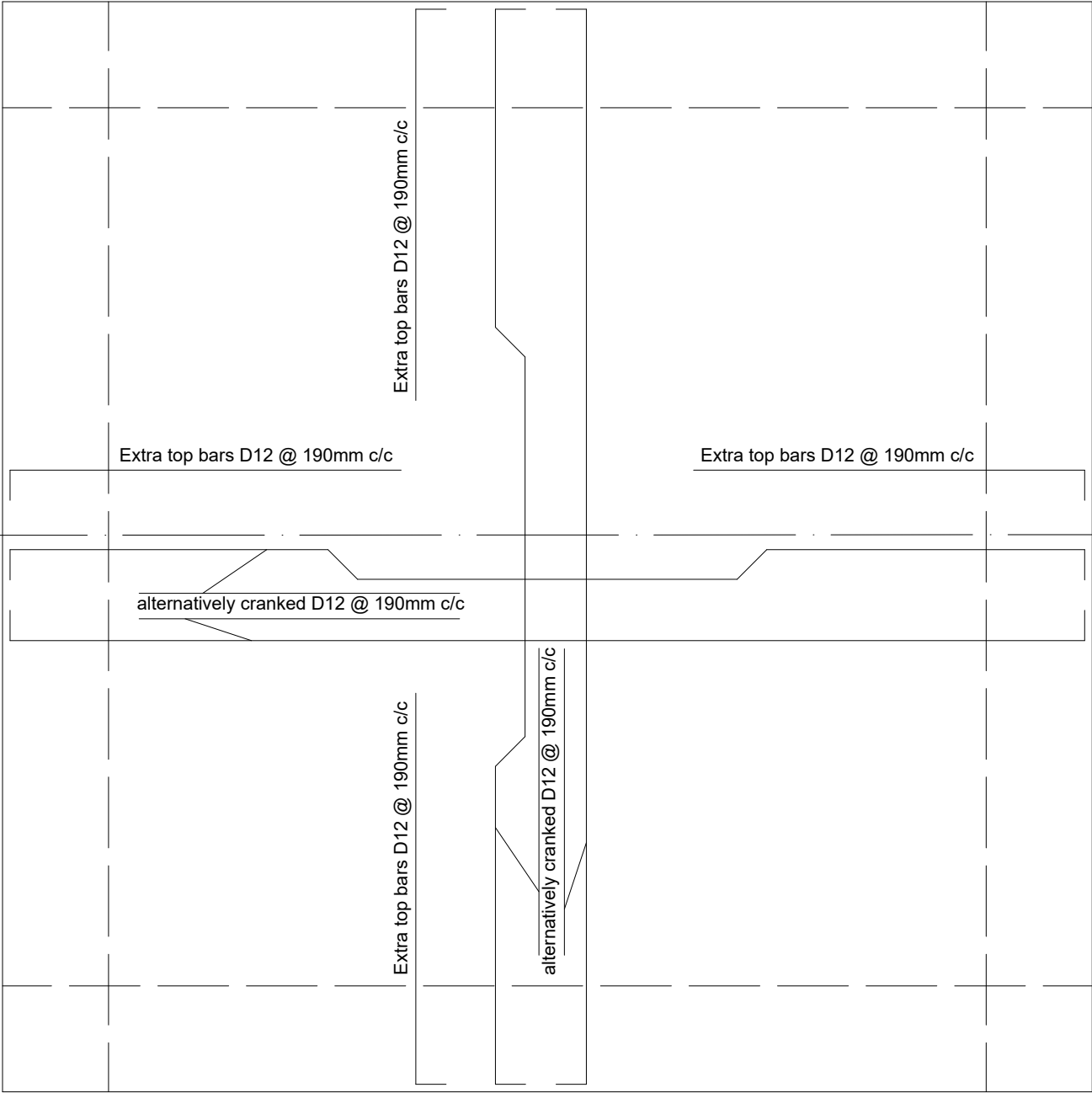
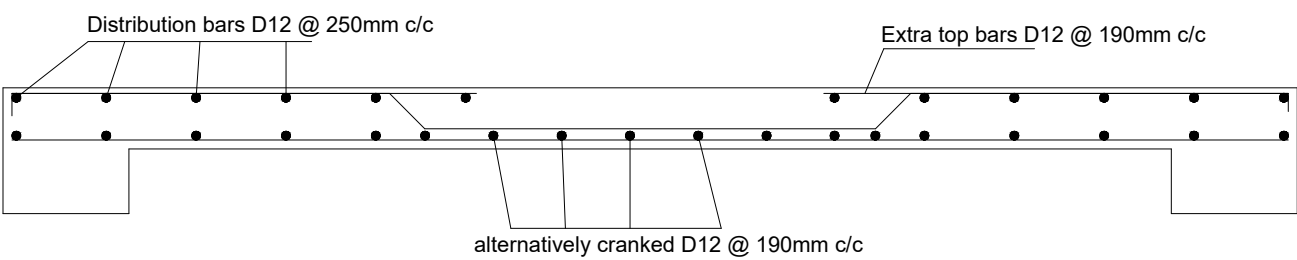
SCALE	As Shown
DATE	Sept. 2022

SHEET NO
5
8

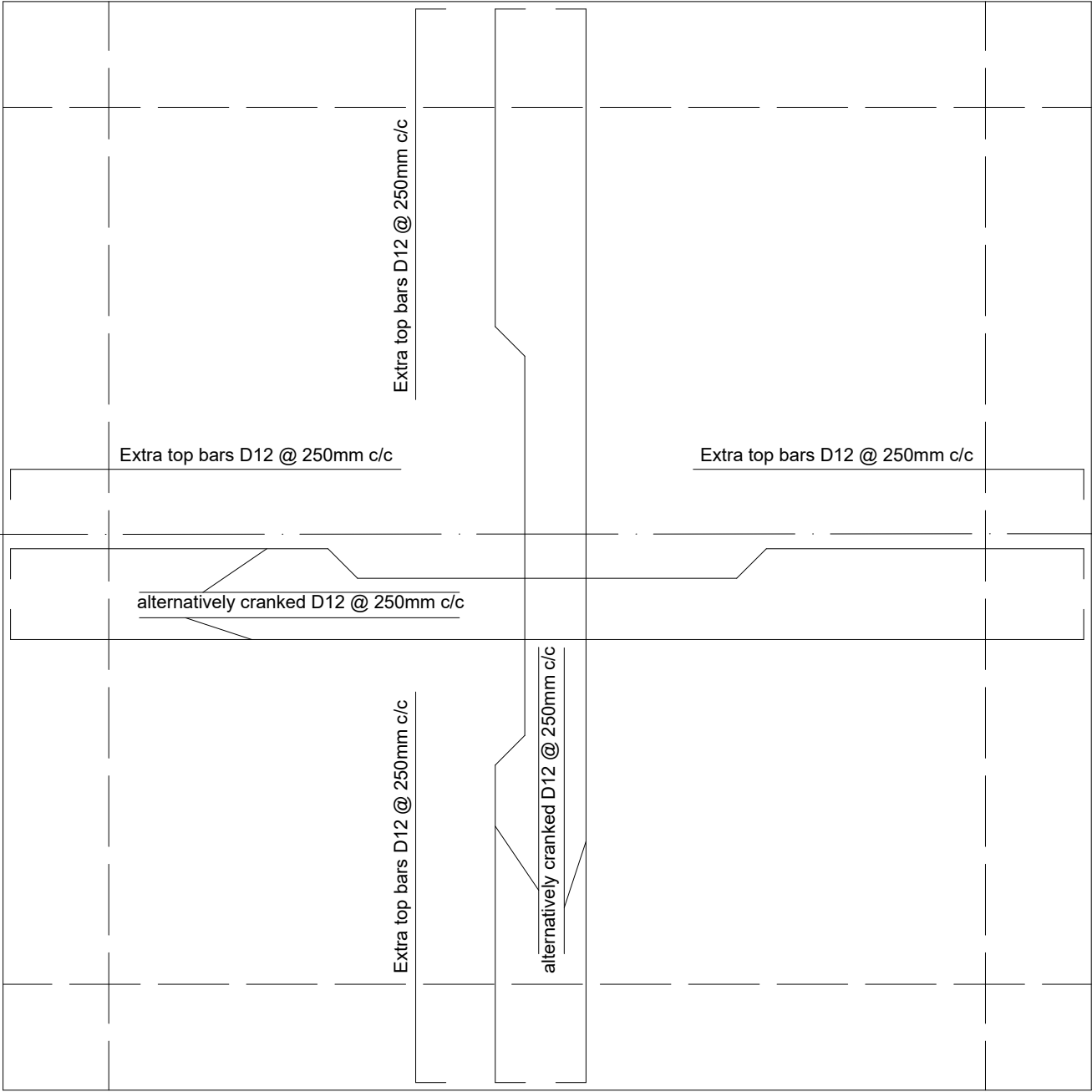
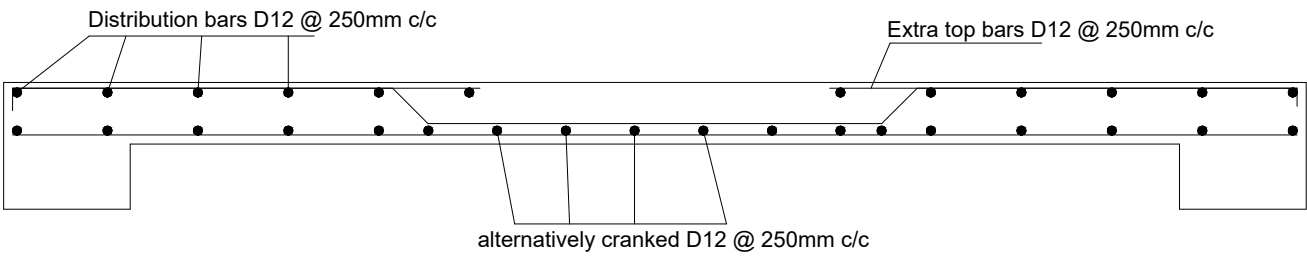
PROVINCE	Baghlan
DISTRICT	Baghlan Jadeed
VILLAGE	Fabrika

PROJECT NAME
17.3 Cubic meter RC Elevated
Water Storage Powered by PV Panels

Ground Floor Slab Reinforcement



1st Floor Slab Reinforcement



Organization for Research
and Community
Development

Designed by	Engineering Department
REVIEWED BY	Engineering Department
APPROVED BY	Engineering Department

SCALE	As Shown
DATE	Sept. 2022

SHEET NO

6

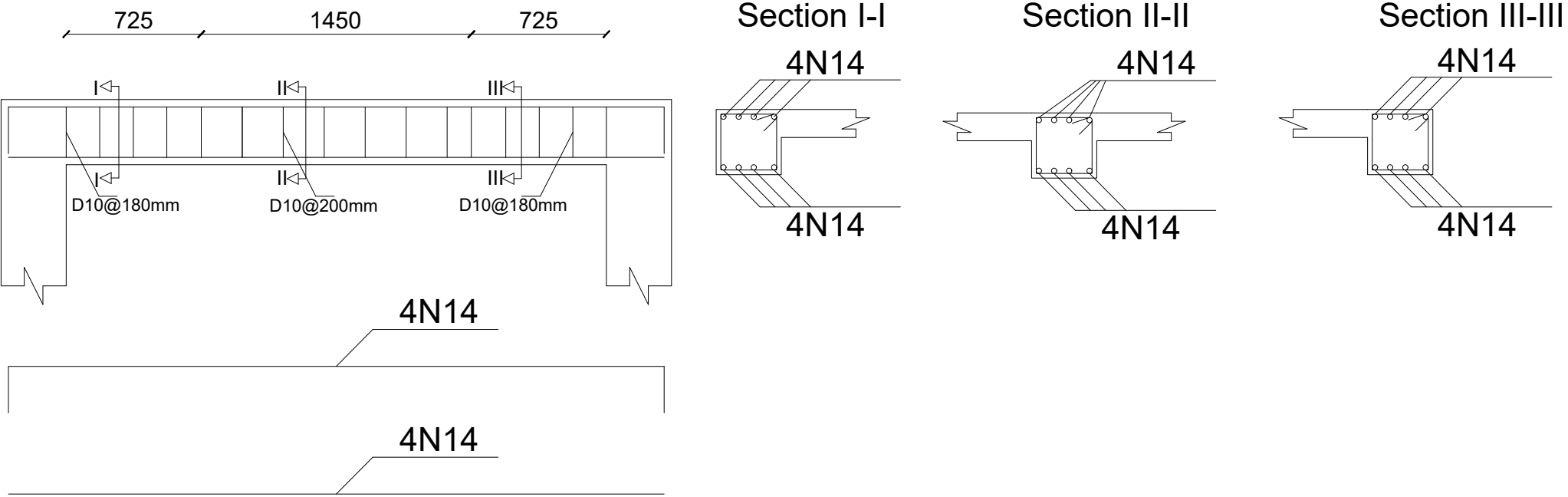
8

ALCD 117-117

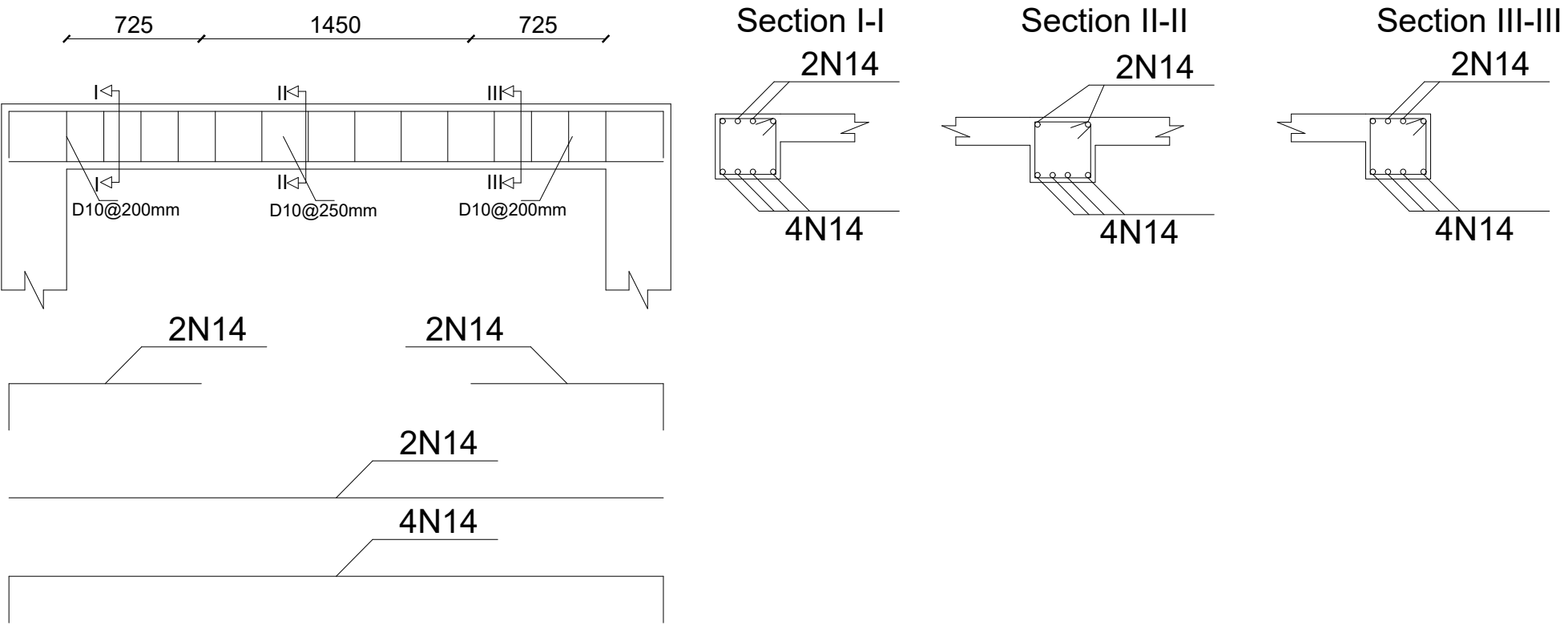
PROVINCE	Baghlan
DISTRICT	Baghlan Jadeed
VILLAGE	Fabrika

PROJECT NAME
17.3 Cubic meter RC Elevated
Water Storage Powered by PV Panels

Ground Floor Beam Reinforcement



1st Floor Beam Reinforcement



Organization for Research
and Community
Development

Designed by	Engineering Department
REVIEWED BY	Engineering Department
APPROVED BY	Engineering Department

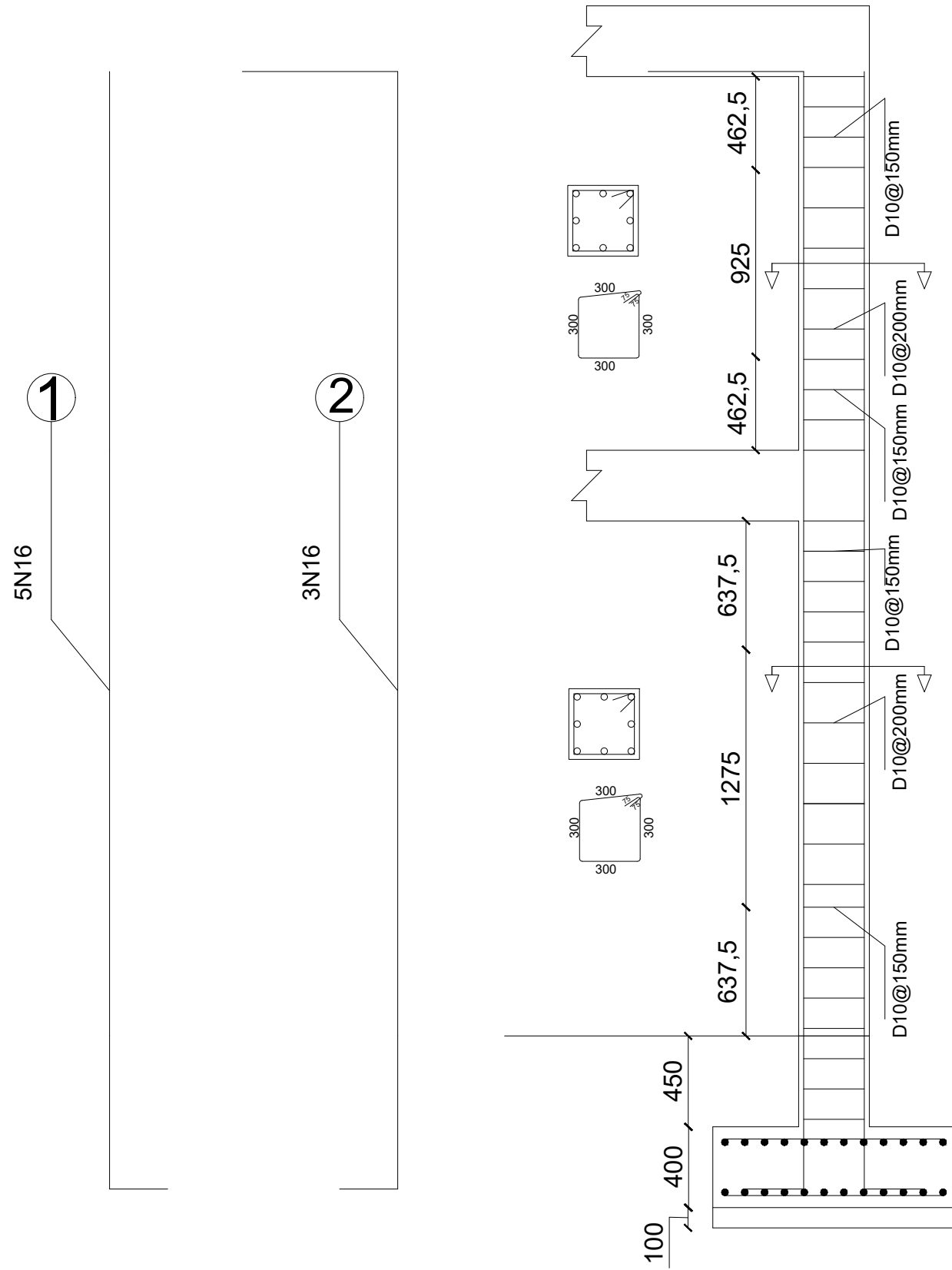
SCALE	As Shown
DATE	Sept. 2022



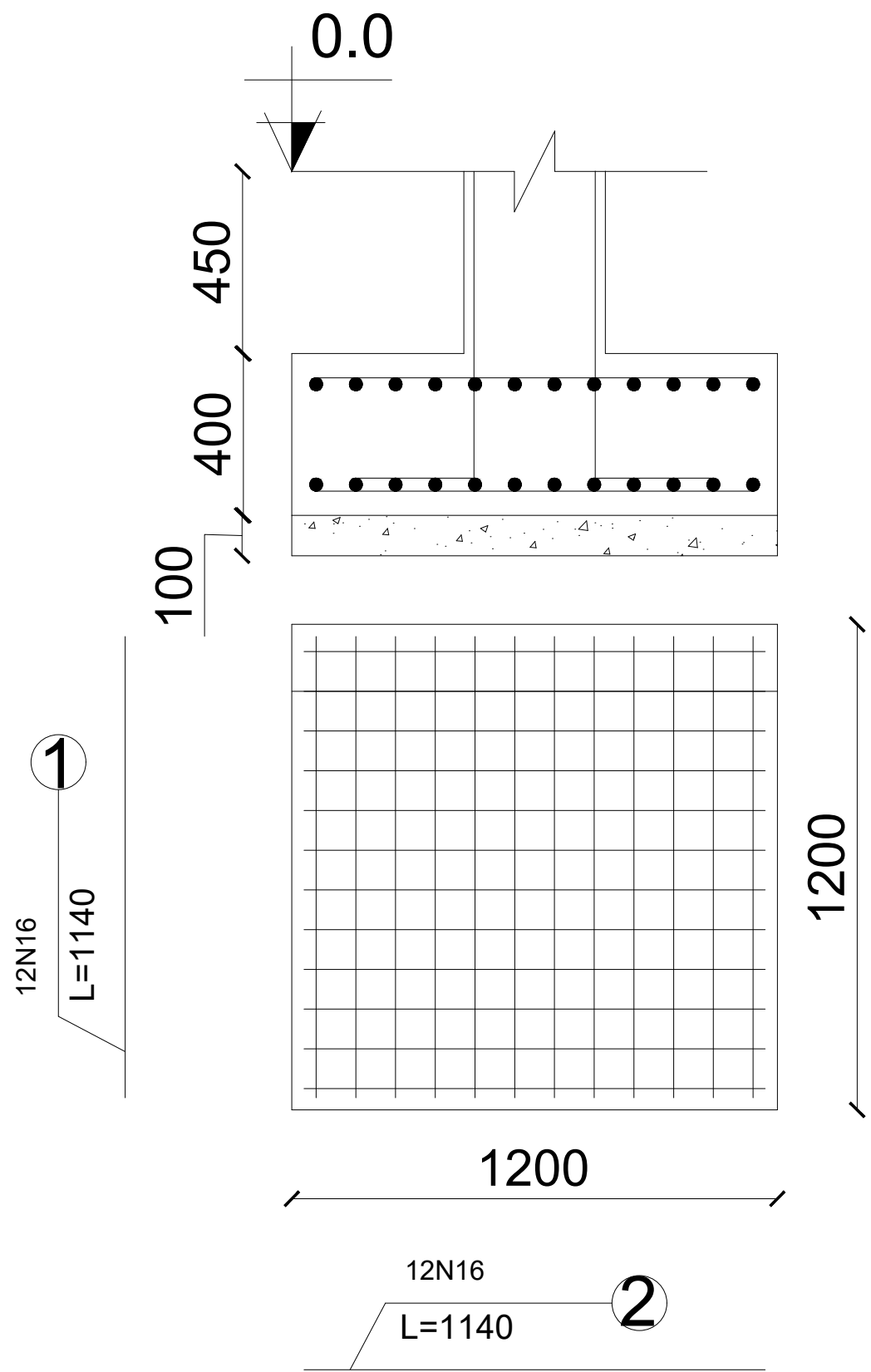
PROVINCE	Baghlan
DISTRICT	Baghlan Jadeed
VILLAGE	Fabrika

PROJECT NAME
17.3 Cubic meter RC Elevated
Water Storage Powered by PV Panels

Column Reinforcement



Foundation Reinforcement



Organization for Research
and Community
Development

Designed by	Engineering Department
REVIEWED BY	Engineering Department
APPROVED BY	Engineering Department

SCALE	As Shown
DATE	Sept. 2022

SHEET NO	8
----------	---

PROVINCE	Baghlan
DISTRICT	Baghlan Jadeed
VILLAGE	Fabrika

PROJECT NAME
17.3 Cubic meter RC Elevated
Water Storage Powered by PV Panels